

Date: 2023-06-26
 Enquiry dated:
 Project:
 Quotation-no.:
 Item:
 Reference:

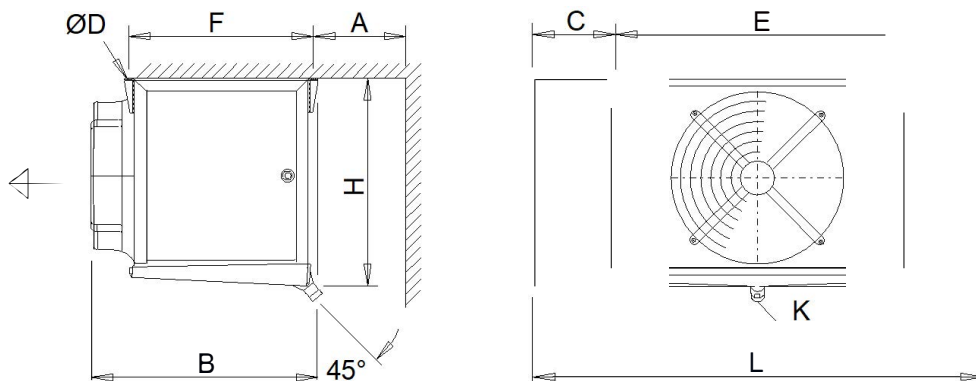


Evaporator (dx) GHN 050.2F/17-ENS50.E For calculation only!

Capacity:	12.2 kW ⁽¹⁾	Refrigerant:	R404A ⁽²⁾
Surface reserve:	0.1 %	Evaporation temp.:	-8.0 °C
Air flow:	6700 m ³ /h	Superheating:	5.0 K
Air inlet:	0.0 °C	Condensing temp.:	35.0 °C
Air outlet:	-4.3 °C	Subcooled temp.:	29.6 °C
Air pressure:	1013 mbar		
Fans:	1 Piece(s) 3~400V 50HzY/(-)	Thermal contact:	internal
Data per motor (nominal data):		Noise pressure level:	56 dB(A) in 3.0 m ⁽³⁾
Speed:	1410 min-1 / (-)	Noise power level:	78 dB(A)
Capacity (mech./el.):	0.49 kW/0.62 kW	Air throw:	approx. 38 m ⁽⁴⁾
Current:	1.45 A ⁽⁵⁾	Frost:	0.0 mm
ErP:	Compliant ⁽⁶⁾		
Total el. power consumption:	0.51 kW	Energy efficiency class:	C (2014)
Casing:	AlMg, Powder coated RAL 9003	Tubes:	Copper ⁽⁷⁾
Surface:	59.4 m ²	Fins:	Aluminum ⁽⁷⁾
Tube volume:	16.9 l	Distr. press. drop:	0.8 bar
Fin spacing:	7.00 mm	Outlet connection:	35.0 * 1.50 mm
Dry weight:	81 kg ⁽⁸⁾	Inlet connection:	16.0 mm
Max. operating pressure:	32.0 bar	PED classification:	Category I, module A ⁽⁹⁾

Dimensions:

- L = 1470 mm
- B = 860 mm
- H = 760 mm
- E = 1000 mm
- F = 700 mm
- C = 240 mm
- A = 550 mm
- ØD = 14 mm
- K = G1¼



Drain according to DIN ISO 228-1 with G-thread (flat gasket).
 Attention: Drawing and dimensions not valid for all accessory options!